



1

---

---

---

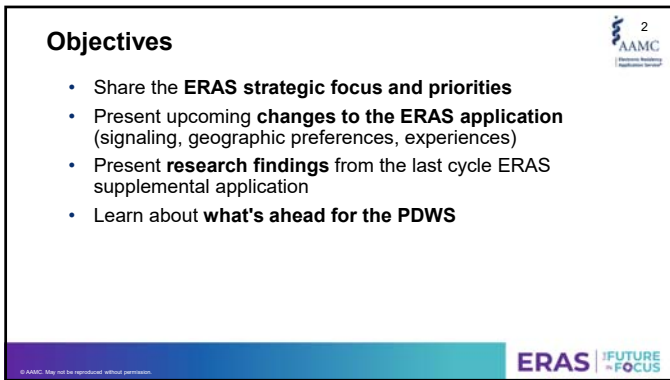
---

---

---

---

---



2

---

---

---

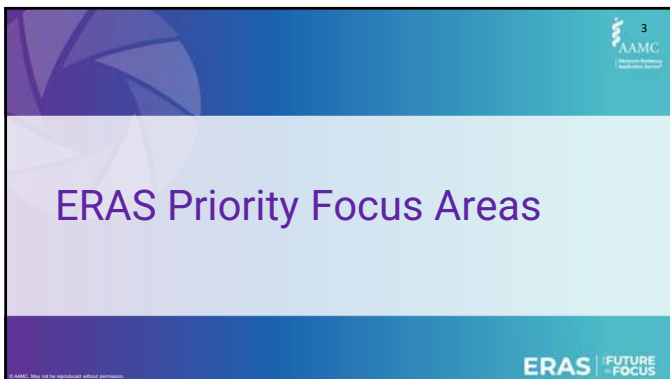
---

---

---

---

---



3

---

---

---

---

---

---


---

---

4  
AAMC  
Residency  
Fellowship  
Search


### ERAS Portfolio Priority Focus Areas

The ERAS program is focusing resources in three areas where we are uniquely positioned to support the residency application process, improve the transition to residency, and promote equity and diversity.




**Selection Tools**

Provide a suite of products and tools that support the residency/fellowship process that are adaptable to the changing needs of the transition to residency.



**Data Analytics**

Provide data and information that drives informed decision making by all parties.



**Thought Leadership & Research**

Lead the residency/fellowship community by identifying priority issues, enabling coordination, sharing information, and innovating to address the biggest challenges.

© AAMC. May not be reproduced without permission.

**ERAS** | FUTURE  
- FOCUS

4

---

---

---

---

---

---

---

---

---

---

5  
AAMC  
Residency  
Fellowship  
Search

### ERAS | FUTURE IN FOCUS

Enhanced Transparency | Improved Experience | Reduced Fragmentation

**2022 FOUNDATION**

*New Leadership / New Strategy*

- Selection Tools**
  - Updated ERAS Interface
  - Improved Software Performance
  - Greater Network Capacity
- Data Analytics**
  - DIO Analytics
- Thought Leadership & Research**
  - Supplemental ERAS Application
  - Specialty Signaling

**2023 TRANSITION**

- MyERAS®** Content/Signaling
- PDWS®** Filter Updates
- Updated Holistic Review Framework & Resources
- DWS®** Analytics
- New Residency Explorer™ Reports
- DEI Assessment
- MyERAS®** Content Refresh

**2024 EVOLUTION**

*thalamus Innovation and Data Integration*

- Residency Explorer Uprate™
- Thalamus Integration (thalamus) **cortex**
- ERAS® Pricing & Fee Assistance
- Cerebellum** for Programs
- Cerebellum** for Institutions
- Data Integration with Thalamus
- Specialty Workforce Reports
- Application Behavior Insights

© AAMC. May not be reproduced without permission.

5

---

---

---

---

---

---

---


---

---


---

6  
AAMC  
Residency  
Fellowship  
Search


### Goals for Updating the MyERAS Application



**Update questions on the ERAS application to reflect current context**



**Help applicants share more information about themselves and their medical education journey**



**Drive mission-aligned holistic review by providing better information about applicants<sup>1</sup>:**

- Experiences
- Geographic information
- Interest via program signals

© AAMC. May not be reproduced without permission.

**ERAS** | FUTURE  
- FOCUS

6

---

---

---

---

---

---

---

---

---

---

**Intentional and iterative integration with ERAS**

**ERAS 2022**

- 3 specialties
- 719 programs
- 29K applicants
- Separate from MyERAS and the PDWS
- 88% Submissions

**ERAS 2023**

- 16 specialties
- 2,800+ programs
- 39,789 Eligible Applicants
- Separate from MyERAS
- Initial integration with the PDWS
- 93.3% Submissions

**ERAS 2024**

- Open to all specialties
- Fully integrated with MyERAS
- Fully integrated with the PDWS

© AAMC. May not be reproduced without permission. **ERAS** | **IFUTURE** | **FOCUS**

7

---

---

---

---

---

---

---

---

---

---

---

---

**Changes in MyERAS for the 2024 Cycle**

**Residency Applicants**

- Updated Experiences
- New Geographic Info
- Program Signals for select specialties

**Fellowship Applicants**

- Updated Experiences
- New Geographic Info

\*Program signals for participating specialties and programs only.

© AAMC. May not be reproduced without permission. **ERAS** | **IFUTURE** | **FOCUS**

8

---

---

---

---

---

---

---

---

---

---

---

---

**How has the community been involved?**

**Diverse input from program staff, medical school reps, med students and residents from:**

- At both university and community-focused affiliated hospitals
- A variety of specialties
- Geographic location

**Evaluation Working Group**

- Review evaluation work
- Provide feedback and recommendations
- DO Representation

**Applicant Input & Data**

- Applicant reaction survey(s)
- Prior ERAS applicant data

© AAMC. May not be reproduced without permission. **ERAS** | **IFUTURE** | **FOCUS**

9

---

---

---

---

---

---

---

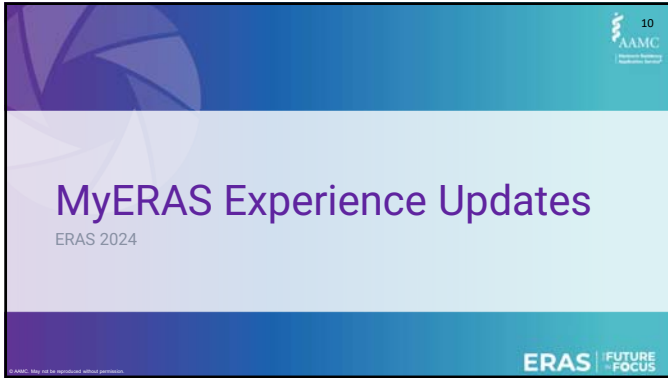
---

---

---

---

---



10

---

---

---

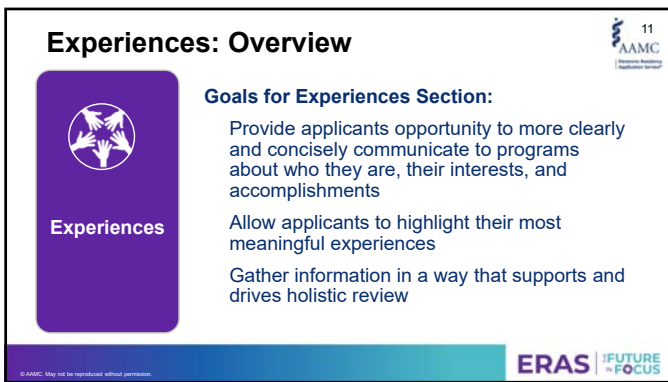
---

---

---

---

---



11

---

---

---

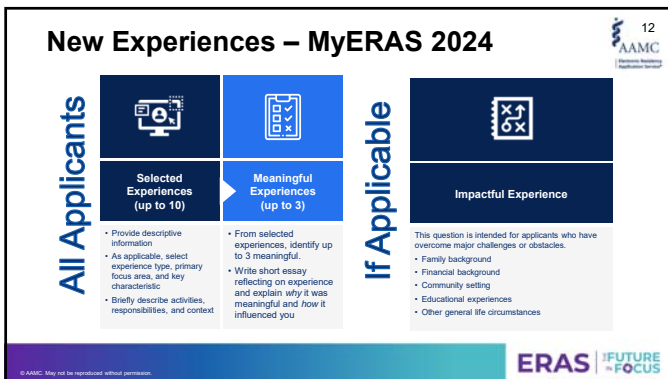
---

---

---

---

---



12

---

---

---

---

---

---

---

---

**Experiences: Utilization**

Program Director respondents reported using or planning to use the experiences information through the following stages of application process:

- 94%: as a part of a holistic application review to determine who to interview
- 79%: as a tiebreaker to help decide whom to interview
- 87%: as part of their preparation for the interview
- 70% thought the experiences responses helped them get a better picture of each applicant

**Applicant Feedback:**  
More than 60% of respondents agreed or strongly agreed that the experience types, focus areas, and key characteristics tags allowed them to showcase what was important to them.

ERAS | FUTURE FOCUS

13

---

---

---

---

---

---

---

---

---

---

**Geographic Preferences and Settings**

ERAS 2024

ERAS | FUTURE FOCUS

14

---

---

---

---

---

---

---

---

---

---

**Geographic Preferences: Overview**

**Goals for Geographic Preferences Section:**

- Provide a process for sharing geographic preferences that enhances accuracy and fairness
- Communicate the importance of geography for an applicant
- Provide an opportunity to share preferences for regions and location setting

Geographic Preferences

ERAS | FUTURE FOCUS

15

---

---

---

---

---

---

---

---

---

---

**Geographic Preferences & Updates to MyERAS 2024**

**All Applicants**

<b>Geographic Preference Divisions (up to 3)</b>	<b>Setting Preference</b>	<b>Location Standardization</b>
<ul style="list-style-type: none"> <li>Select up to three geographic divisions; using US census divisions OR indicate no preference</li> <li>Short description to provide explanation for each</li> </ul>	<ul style="list-style-type: none"> <li>Indicate a degree of preference from urban to rural setting OR indicate no preference</li> <li>Short description to provide explanation</li> <li>Urban, urban/suburban, suburban, suburban/rural, rural</li> </ul>	<p>Standard Collection of all location information:</p> <ul style="list-style-type: none"> <li>Country</li> <li>State</li> <li>City</li> <li>Postal Code</li> <li>Setting</li> </ul> <p>Applies to:</p> <ul style="list-style-type: none"> <li>Addresses</li> <li>Hometown(s)</li> <li>Experiences</li> <li>Education</li> <li>Training</li> </ul>

© AAMC. May not be reproduced without permission. **ERAS | FUTURE FOCUS**

16

---

---

---

---

---

---

---

---

---

---

**Geographic Preferences: Utilization**

Programs may filter applicants based on geographic and/or setting preferences.

- 94%** as a part of a holistic application review to decide whom to interview
- 88%** as a tiebreaker to help decide whom to interview
- 70%** used geographic preferences to prepare for the interview
- 82%** agreed that geographic preferences helped them identify applicants they would have otherwise overlooked

**Applicant Feedback:** Nearly 90% of respondents reported that had they been given the opportunity to report different geographic preferences to every specialty to which they applied, their geographic preferences would not change.

© AAMC. May not be reproduced without permission. **ERAS | FUTURE FOCUS**

17

---

---

---

---

---

---

---

---

---

---

**Program Signals**

ERAS 2024

© AAMC. May not be reproduced without permission. **ERAS | FUTURE FOCUS**

18

---

---

---

---

---

---


---

---


---

---

**Program Signals: Overview**



19




**Program Signals**

**What is a program signal?**

Program signals *offer applicants the opportunity to express interest* in a residency program at the time of application

Program signals are *intended to be used by programs as one of many data points* in deciding whom to invite to interview.

© AAMC. May not be reproduced without permission.



19

---

---

---

---

---

---


---

---

---

---

**Program Signals: Utilization**



20

Programs may filter applicants based on program signals.


- 88%: as a screening tool before a more thorough application review
- 86%: as a tiebreaker to help decide whom to interview
- 64%: during the interview to learn more about why an applicant signaled their program

75% agreed that program signals helped them identify applicants they would have otherwise overlooked

**Applicant Feedback:**  
Over 80% of respondents who submitted program signals noted that their signals reflected their true preferences at the time of their application.

64% of respondents agreed or strongly agreed that program signals may help them be noticed by programs in which they have the most interest.

© AAMC. May not be reproduced without permission.



20

---

---

---

---

---

---


---

---

---

---


**Addition of Program Signals to MyERAS**



21

- Applicants will be able to provide signals at the time of submitting application
- Support specialty specific number of signals
- Support two-tiered signals for interested specialties

© AAMC. May not be reproduced without permission.



21

---

---

---

---

---

---

---

---

---

---

### Program Signals - MyERAS 2024

Participating Specialties	Number of Program Signals
Anesthesiology	5 (gold), 10 (silver)
Child Neurology & Neurodevelopmental Disabilities	3
Dermatology	3 (gold), 25 (silver)
Diagnostic Radiology and Interventional Radiology	6 (gold), 6 (silver)
Emergency Medicine	7
Family Medicine	5
General Surgery	5
Internal Medicine	7
Internal Medicine & Psychiatry	2
Neurological Surgery	25
Neurology	3
Obstetrics and Gynecology	3 (gold), 15 (silver)
Orthopedic Surgery	30
Otolaryngology	25
Pathology	5
Pediatrics	5
Physical Medicine and Rehabilitation	5
Public Health and General Preventive Medicine	3
Psychiatry	5
Thoracic Surgery	3

**Home/Away Signaling  
Guidance  
(Applies to ALL  
Specialties)**

AAMC guidance is to signal any program the applicant is interested in (including the applicant's home program or away rotation sites)

22

**ERAS** | **IFUTURE**  
**FOCUS**

© AAMC. May not be reproduced without permission.

22

---

---

---

---

---

---

---

---

---

---

### Comparison of Program Signaling Approaches

**Specialties with Low Volume Approach**

- Applicants indicate interest in their top programs only.
- More accurate representation of applicants' top choices at the time of application.

**Specialties with High Volume Approach**

- Applicants indicate their interest in many programs.
- Spreads out the number of signals received across programs.
- Lower stakes choice for signals and more flexibility for applicants.

**Specialties with Two-Tiered Approach**

- Applicants indicate interest in their top programs and a second tier of programs.
- Spreads out the number of signals received across programs.
- Combination of low and high volume approach to signals.

23

**ERAS** | **IFUTURE**  
**FOCUS**

© AAMC. May not be reproduced without permission.

23

---

---

---

---

---

---

---

---

---

---

### Key Takeaways

In all participating specialties, sending a program signal resulted in a higher probability of interview invitation.

Applicants used a variety of experience types, key characteristics and focus areas.

In most specialties, both geographic preference alignment and "no preference" resulted in higher probabilities of interview invitation.

Little to no group differences by applicant type (MD, DO, IMG), race/ethnicity and gender.

24

**ERAS** | **IFUTURE**  
**FOCUS**

© AAMC. May not be reproduced without permission.

24

---

---

---

---

---

---

---


---


---


---



**For more information:**

Supplemental ERAS Application Data and Reports:  SCAN ME

What's New in the 2024 MyERAS Application:  SCAN ME

The MyERAS Application and Program Signaling for ERAS 2024:  SCAN ME

© AAMC. May not be reproduced without permission. **ERAS** | **IFUTURE** **FOCUS**

25

---

---

---

---

---

---

---

---

---

---

**Overview of Collaboration\***

**Institutions**  
**Cerebellum** – Institution level data and analytics dashboard measuring DEI and geographic outcomes (includes ERAS Analytics for Institutions (DIOs))

---

**Programs**  
**Thalamus Core** – Interview scheduling and management platform  
**Itinerary Wizard** – Itinerary builder that generates applicant / faculty interview day schedules with links  
**Cerebellum** – Program level and national level data and analytics dashboard measuring DEI and geographic outcomes

---

**Applicants**  
**Thalamus Core** – Interview scheduling and management platform

---

**Schools**  
**ERAS DWS Analytics Dashboard** – Interview and analytics from ERAS and Thalamus

\*All products listed on this slide are complimentary. **ERAS** | **IFUTURE** **FOCUS**

26

---

---

---

---

---

---

---

---

---

---

**Timeline for Collaboration**

**ERAS 2024**

- Programs and institutions can sign up to use Thalamus Core and Cerebellum in EAM for the upcoming cycle

**Interview Management:**

- Programs can continue to use ERAS Scheduler for the ERAS 2024 cycle
- CSV and Bulk Print exports in ERAS PDWS to move data into Thalamus Core

**Analytics:**

- Institutions will continue to have access to ERAS Analytics for Institutions (DIOs)
- ERAS to launch DWS analytics in fall/winter 2023

**ERAS 2025**

- ERAS Scheduler and ERAS Analytics for Institutions will retire and be replaced by Thalamus Core and Cerebellum

**Interview Management:**

- The tool for ERAS-participating programs to schedule and manage interviews will be Thalamus Core
- Data and documents will seamlessly move between ERAS and Thalamus

**Analytics:**

- All Institutions and Programs will have access to Cerebellum
- ERAS DWS Analytics continues to evolve

© AAMC. May not be reproduced without permission. **ERAS** | **IFUTURE** **FOCUS**

27

---

---

---

---

---

---

---

---

---

---

28  
AAMC  
ERAS | FUTURE FOCUS

**Thank you for your time today!**  
Please reach out with any additional questions.

28

---

---

---

---

---

---

---